

# RELAX

# FIRM CUSHION



Firm Cushion Layered

The **Relax Firm** Cushion provides integrated wedges within the cushion will allow for a off-loading effect from the Ischial Tuberosities onto the lateral shelf. The waterfall front edge of the cushion will accommodate foot propulsion or tight hamstrings. An increased open pelvic support area allows for greater distribution of pressure and greater pelvic support

### Quick Reference Guide

#### RELAX SERIES - FIRM CUSHION

ADP: **SESWM0040**

Width = 18" and up

Part Number: Refer below

Length = 18" and up

#### PART NUMBERS

Part Number: RF(W X L)

Fill in width (W) and length (L) to get part number.

E.g. For a W = 15 and L = 17 Cushion; Part number would be RF1517

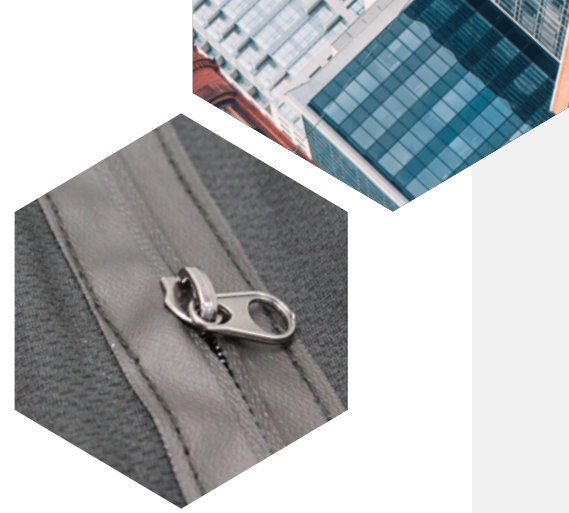
#### COVER OPTIONS

Part Number	Discription	ADP Codes
RF-BCOV	Bariatric Cover	<b>SESND1060</b>

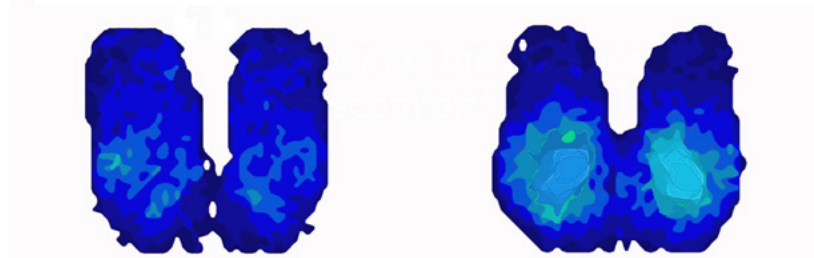
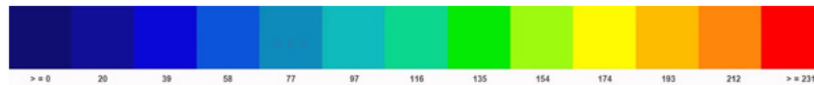
# RELAX

## WATERPROOF ZIPPER

Waterproof zipper seals in the cushion and prevents fluids from entering inside of the cover.



Pressure Reading Scale in mm-Hg



Pressure Map	Relax Firm
Duration	1 hr
Weight	125 lbs./57 Kg
Average Pressure	30 mm-Hg

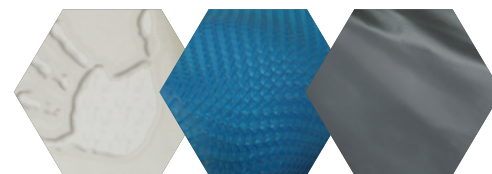
Pressure Map	Relax Firm
Duration	1 hr
Weight	200 lbs./57 Kg
Average Pressure	30 mm-Hg

## KEY FEATURES

- Integrated wedges to help offloading
- Multiple layers of foam density allows for comfortable pelvic support and pressure relief
- Water Fall Front for Thigh Support and Comfort
- Abductor for Comfort and Proper Thigh Positioning
- Incontinent Inner Cover
- Superior Pressure Reduction for Bariatric Users
- Easy Clean, Incontinent, Four Way Stretch Outer Cover

## OVERLAYS

\* Foam Pad      \* Visco      Incontinent



ADP: SEBND0015      SEBND0020

\* Up-charge items

SPECIFICATIONS	RELAX SERIES - FIRM CUSHION
ADP	<b>SESWM0040</b>
PRODUCT WEIGHT	4 lbs. (16" x 18")
WIDTH	18" and Up
DEPTH	18" and Up
HEIGHT	3.75"
WEIGHT CAPACITY	Up to 600 lbs.

FIRM CUSHION

RELAX

CUSHIONS